



Sant Julià de Lòria
Andorra
31/05 - 1/06
2025



EVENT INFORMATION



On the weekend of May 31st and June 1st, the cycling vibes takes place in Andorra, Naturland, at an ideal place to enjoy cycling in the Andorran mountains. The festival will feature venues adapted to all levels, whether you're a beginner or an expert, or if you prefer to come with the family. At the Naturland Bikeshow, you'll find the adrenaline rush you're looking for among the landscapes of La Rabassa.

We'll be able to enjoy authentic XCO with the Shimano Super Cup Massi and the Marathon Cup BTT participants, and the little ones will also have their moment with the XCO Super Cup Youth competition.

This year's edition will also feature the HERO UCI Marathon World Cup.

LOCATION



NATURLAND



HOW TO GET THERE

Address:

Nordic ski resort
La Rabassa – Naturland (Cota 2000)
Carretera de la Rabassa – Km.8
AD600 – Sant Julià de Lòria (Andorra)

Naturland is located in the territory of Sant Julià de Lòria, in the south of Andorra, about 15 km from Andorra la Vella and 2,000 meters altitude.



By Car:

From Spain:

From Barcelona: approximately 2 hours 45 minutes (200 km).

- Take the C-16 towards the Cadí Tunnel.
- Continue on the N-145 until you reach the Andorran border.
- Upon reaching Sant Julià de Lòria, follow the signs for La Rabassa – Naturland (Cota 2000).

From Lleida: approximately 2 hours (150 km).

- Take the C-14 towards Andorra.
- Cross the border and continue towards Sant Julià de Lòria and then to La Rabassa – Naturland.

From France:

From Toulouse: approximately 2 hours 45 minutes (190 km).

- Take the A66 and then the N20 to Pas de la Casa.
- Go through the Envalira Tunnel and follow the signs to Sant Julià de Lòria.

Parking:

Naturland offers free parking at “Cota2000” zone. It’s recommended to arrive early for find place.



By Bus

Several bus companies connect Andorra with Spain and France.

From Spain

Directbus: Barcelona (Airport and Sants) – Andorra (3h).

Alsa: Departures from Barcelona, Lleida and Madrid.

Andbus: Barcelona – Andorra (3h).

Recommended stop: Sant Julià de Lòria. From this point, take a taxi or private transport to Naturland (Cota 2000).

From France

Montmantell or Andbus: Departures from Toulouse and other French cities.

By Plane

The closest airports to Andorra are:

Andorra-La Seu d'Urgell Airport (LEU).

25 km from Sant Julià de Lòria.

Commercial flights from Madrid with Air Nostrum.

Barcelona-El Prat Airport (BCN).

200 km from Andorra (3 hours by car or bus).

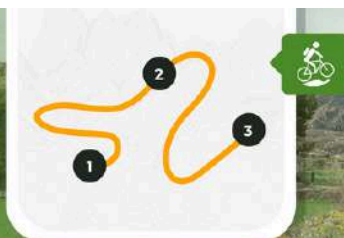
Bus connections are available with Directbus or Andbus.

Toulouse-Blagnac Airport (TLS).

190 km from Andorra (2 hours 45 minutes by car).

Buses are available from Toulouse to Andorra.

**Plan your trail and navigate it
from the app or your GPS**



wikiloc



Create your personalized training route. Choose the places you want to pass through; Wikiloc will create a trail using the most popular stretches of trails from other community members

Try the Route Planner



MORE USEFUL INFORMATION

Nearby accommodation:

Hotel Folch – Calle de l'Oria, 6, AD600 Sant Julià de Lòria

Hotel Imperial – Av. Rocafort 27, AD600 Sant Julià de Lòria

Hotel Sol-Park – AD600 Sant Julià de Lòria

Hotel Barcelona – Ctra. Is de Civís (Aixovall), AD600 Sant Julià de Lòria

Restaurants:

Participant Cyclist Menu: Restaurant Cota 2000 - Ctra. de la Rabassa, 606, Sant Julià de Lòria, Andorra

Restaurant Pizzeria Venecia – Av. Rocafort 19, Sant Julià de Lòria

Borda de l'Avi – Carretera de la Rabassa, km 6, Sant Julià de Lòria

Restaurant San Telmo – Av. Verge de Canòlich, 25, Sant Julià de Lòria

Hospitals:

Hospital Nostra Senyora de Meritxell – Av. Fiter i Rossell

Centro Médico Sant Julià – Av. Verge de Canòlich, Sant Julià de Lòria

Fundació Sant Hospital de la Seu d'Urgell - Pssg. Joan Brudieu, 8 La Seu d'Urgell (Lérida)

Parking areas:

Naturland Parking – Parking within the park facilities

Sant Julià de Lòria Municipal Parking – Located in the center of town

Useful Information map:

<https://comusantjulia.ad/ca/turisme/allotjaments-restauracio-i-aparcaments/planol/>



VILLAGE MAP

NATURLAND COTA 2000



INSTITUTIONAL SPONSOR



SPONSORS
SUPERCUP



SPONSORS
MARATHON BTT



OFFICIAL BIKE WASH



OFFICIAL MAPPING



SUPPORTED BY



ORGANIZING



EVENT SCHEDULE



Saturday, May 31st

SHIMANO SUPER CUP MASSI

8:00 AM Bib number's pick up (up to 30 minutes before each race)

9:30 AM 1st Start: Cadet, Junior (F), Master (F), and Master 40/50/60 (M)

11:00 AM 2nd Start: Elite (F), S23 (F), Junior (M), and Master 30 (M)

11:15 AM Awards Ceremony: Cadet, Junior (F), Master 30/40 (F), and Master 40/50/60 (M)

12:45 PM 3rd Start: Elite/S23 (M)

2:15 PM Shimano Super Cup Massi Awards Ceremony

2:00 PM - 3:15 PM Super Cup Youth Circuit Recognition

SUPER CUP YOUTH

9:00 AM – 4:00 PM Bib number's pick up for Super Cup Youth

4:00 PM Pre-Benjamin Super Cup Youth Start

4:15 PM Benjamin Super Cup Youth Start

4:30 PM Beginner Super Cup Youth Start

5:00 PM U12 Men and Women Super Cup Youth Start

5:50 PM Junior Men and Women Super Cup Youth Start

6:30 PM Super Cup Youth Awards Ceremony

MARATHON CUP

12:00h - 18:00h Bib number's pick up for SCOTT Marathon Cup Btt

Sunday, June 1

HERO UCI MARATHON WORLD CUP

7:00-8:00 AM Bib number's pick up

8:30 AM Start of the HERO UCI MARATHON WORLD CUP NATURLAND (ANDORRA)

MARATHON CUP

7:00 AM - 9:00 AM Bib number's pick up for SCOTT Marathon Cup Btt

9:30 AM Marathon Cup MTB XCM and XCP (PRO and OPEN) Start

12:30h Awards ceremony HERO UCI MARATHON WORLD CUP

13:00h Awards ceremony SCOTT Marathon CUP Naturland



MTB SUPERCUP YOUTH 2025



- 1 01 FEB ST. FRUITÓS DE BAGES**
BARCELONA
- 2 22 FEB BANYOLES**
GIRONA ALEVÍN | INFANTIL
- 3 10 MAY SANTA SUSANNA**
BARCELONA
- 4 31 MAY NATURLAND**
ANDORRA
- 5 20 SEP SEA OTTER EUROPE**
GIRONA

OCISPORT YOUTH
SPORT FUTURE GENERATIONS ACADEMY

POWERED BY

SHIMANO

MASSI

OFFICIAL BIKE WASH

PRORIDE
by INDOORAMA

SUPPORTED BY

FEDERACIÓ CATALANA DE CICLISME

esportcat
Generalitat de Catalunya

OFFICIAL MAPPING

wikiloc

ORGANIZING

OCISPORT
SPORT FUTURE GENERATIONS

[supercup_cci](https://www.instagram.com/supercup_cci)

www.ocisportacademy.com

[ocisport](https://www.instagram.com/ocisport)



The Super Cup Youth at Naturland is the fourth YOUTH race of the year. There will be three different circuits: one for Prebenjamí (U6) and Benjamí (U8) categories, one for Principiants (U10), and another for the Aleví (U12) and Infantil (U14) categories.

The youngest categories are non-competitive, as the main goal is to promote sports among the youngest participants. The Prebenjamin and Benjamin categories will receive a participation medal as a gift, while the Infantil, Alevín, and Principiant categories will have the usual award ceremony.

The bib number given at the first event of the series will be used for all subsequent races in the championship. (In case of loss, a €5 fee will be charged for a new plate and number reassignment.)

CATEGORY	AGE
PREBENJAMI (U6)	5-6
BENJAMI (U8)	7-8
PRINCIPIANT (U10)	9-10
ALEVI (U12)	11-12
INFANTIL (U14)	13-14

[TO SEE THE FULL RULEBOOK, CLICK HERE](#)

POWERED BY

SHIMANO

MASSI

OFFICIAL BIKE WASH

PRORIDE

SUPPORTED BY

FEDERACIÓ CATALANA CICLISME

esportcat

Generalitat de Catalunya

TECH. PARTNER

GARMIN

OFFICIAL MAPPING

wikiloc

ORGANIZING

OCISPORT

OUTDOOR EXPERIENCES

supercup_cci

www.ocisportacademy.com

ocisport

TRACKS



PREBENJAMI
BENJAMI



PRINCIPIANT



ALEVI
INFANTIL



SHIMANO

SUPERCUP MTB

MASSI

2025

COPA CATALANA
INTERNACIONAL BTT
Biking

UCI



31 MAY
NATURLAND
ST. JULIÀ DE LÒRIA | ANDORRA

SATURDAY 31

08:00H BIB PICK UP UNTIL 30 MINUTES BEFORE EVERY RACE

09:30H START CADET | JUNIOR (W) | MASTERS (W)
M40/50/60 (M)

11:00H START ELITE/U23 (W) | JUNIOR (M) | M30 (M)

11:15H AWARDS CEREMONY

12:45H START ELITE/U23 (M)

14:15H AWARDS CEREMONY

16:00H START SUPER CUP YOUTH

18:30H AWARDS CEREMONY



SANT JULIÀ DE LÒRIA



Andorra



NATUR
LAND
ANDORRA

TITLE SPONSOR

SHIMANO

MAIN SPONSOR

MASSI

OFFICIAL SPONSOR

INVERSE

Powerbar

SIROKO

OFFICIAL BIKE WASH

PRORIDE

SUPPORTED BY

UCI

FCCC

FEDERACIÓ CATALANA
CICLISME

FEDERACIÓ CATALANA
CICLISME

SHIMANO

SEA OTTER EUROPE
GARMIN

OFFICIAL MAPPING

wikiloc

ORGANIZING

OCCIANDSPORT
OUTDOOR EXPERIENCES

WWW.SUPERCUPMTB.COM

COPACATALANAINTERNACIONALBTT

SUPERCUP.CCI

WWW.SUPERCUPMTB.COM

SHIMANO SUPERCUP MTB

MIN 000004 GARMIN

SHIMANO

SUPERCUP MTB

MASSI

2025



8-9 FEB | LA NUCÍA
ALICANTE



23 MAR | SABIÑÁNIGO
HUESCA



31 MAY | NATURLAND
SANT JULIA DE LORIA | ANDORRA



22-23 FEB | BANYOLES
GIRONA



11 MAY | STA. SUSANNA
BARCELONA



28 SEP | SEA OTTER EUROPE
GIRONA

TITLE SPONSOR

SHIMANO

MAIN SPONSOR

MASSI

OFFICIAL SPONSOR

INVERSE

Powerbar

SIROKO

OFFICIAL BIKE WASH

PRORIDE
by PROQUIMA

SUPPORTED BY

UCI

REAL FEDERACIÓN ESPAÑOLA
CICLISMO

SHIMANO

COSTA BRAVA | GIRONA
SEA OTTER EUROPE
GARMIN

OFFICIAL MAPPING

wikiloc

ORGANIZING

OCISPORT
OUTDOOR EXPERIENCES

WWW.SUPERCUPMTB.COM

COPACATALANAINTERNACIONALBTT

SUPERCUP.CCI

WWW.SUPERCUPMTB.COM

COPA CATALANA

INTERNACIONAL BTT

2025

Biking Point



C3 2 FEB | ST. FRUITÓS DE BAGES
BARCELONA

C2 16 MAR | CORRÓ D'AMUNT
BARCELONA

C1 31 MAY | NATURLAND
SANT JULIA DE LÒRIA | ANDORRA

HC 22-23 FEB | BANYOLES
GIRONA

CRI C1 18-11 MAY | STA. SUSANNA
BARCELONA

C2 28 SEP | SEA OTTER EUROPE
GIRONA

TITLE SPONSOR

Biking Point

MAIN SPONSOR

MASSI

OFFICIAL SPONSOR

INVERSE

nutrisport.

OFFICIAL BIKE WASH

PRORIDE
by PROUMIA

SUPPORTED BY

UCI

REAL FEDERACIÓN ESPAÑOLA
CICLISMO

FEDERACIÓ
CATALANA
CICLISME
1974

esportcat
Generalitat
de Catalunya

OFFICIAL MAPPING

wikiloc

ORGANIZING

OCISPORT
OUTDOOR EXPERIENCES

WWW.COPACATALANABTT.COM

[COPACATALANAINTERNACIONALBTT](https://www.facebook.com/COPACATALANAINTERNACIONALBTT)

[SUPERCUP.CCI](https://www.instagram.com/SUPERCUP.CCI)

WWW.COPACATALANABTT.COM



REGISTRATION SHIMANO SUPER CUP MASSI | C1

Registrations can be made through the registration form available on the event website until the Wednesday before the race, at 11:59 PM.

For any inquiries:

Phone: +34 938 088 091

Email: hola@ocisport.net



[WEB PAGE SHIMANO SUPER CUP MASSI](#)

PADDOCK

For teams wishing to reserve space, there will be a one-time payment covering all the races of the 2025 Shimano Super Cup Massi.

For the Super Cup Youth race, paddock space can also be reserved via email.

The paddock reservation form can be completed on the website or by contacting hola@ocisport.net.

**¿Quieres conseguir un
Pack Degustación Powerbar?**

¡REGÍSTRATE AQUÍ Y
PARTICIPA EN EL SORTEO!

Incluye la descarga gratis de una Estrategia Nutricional exclusiva para tu carrera.

SHIMANO
SUPER CUP MTB
MASSI

Powerbar

[JOIN THE GIVEAWAY](#)



SHIMANO SUPER CUP MASSI



The Shimano Super Cup Massi is the benchmark Mountain Bike competition on a global scale. Since its inception in 2002, this prestigious series has grown spectacularly.

After a long and successful trajectory, it is now the second-highest point-scoring circuit worldwide.



TITLE SPONSOR

SHIMANO

MAIN SPONSOR

MASSI

OFFICIAL SPONSOR

INVERSE

Powerbar

SIROKO

OFFICIAL BIKE WASH

PRORIDE
by PROQUIMIA

SUPPORTED BY

UCI

ECCC
FEDERACIÓ CATALANA DE CICLISME

FEDERACIÓ CATALANA DE CICLISME

FEDERACIÓ CATALANA DE CICLISME

SHIMANO

COSTA BRAVA | GIRONA
SEA OTTER EUROPE
GARMIN

OFFICIAL MAPPING

wikiloc

ORGANIZING

OCIANSPORT
OUTDOOR EXPERIENCES

WWW.SUPERCUPMTB.COM

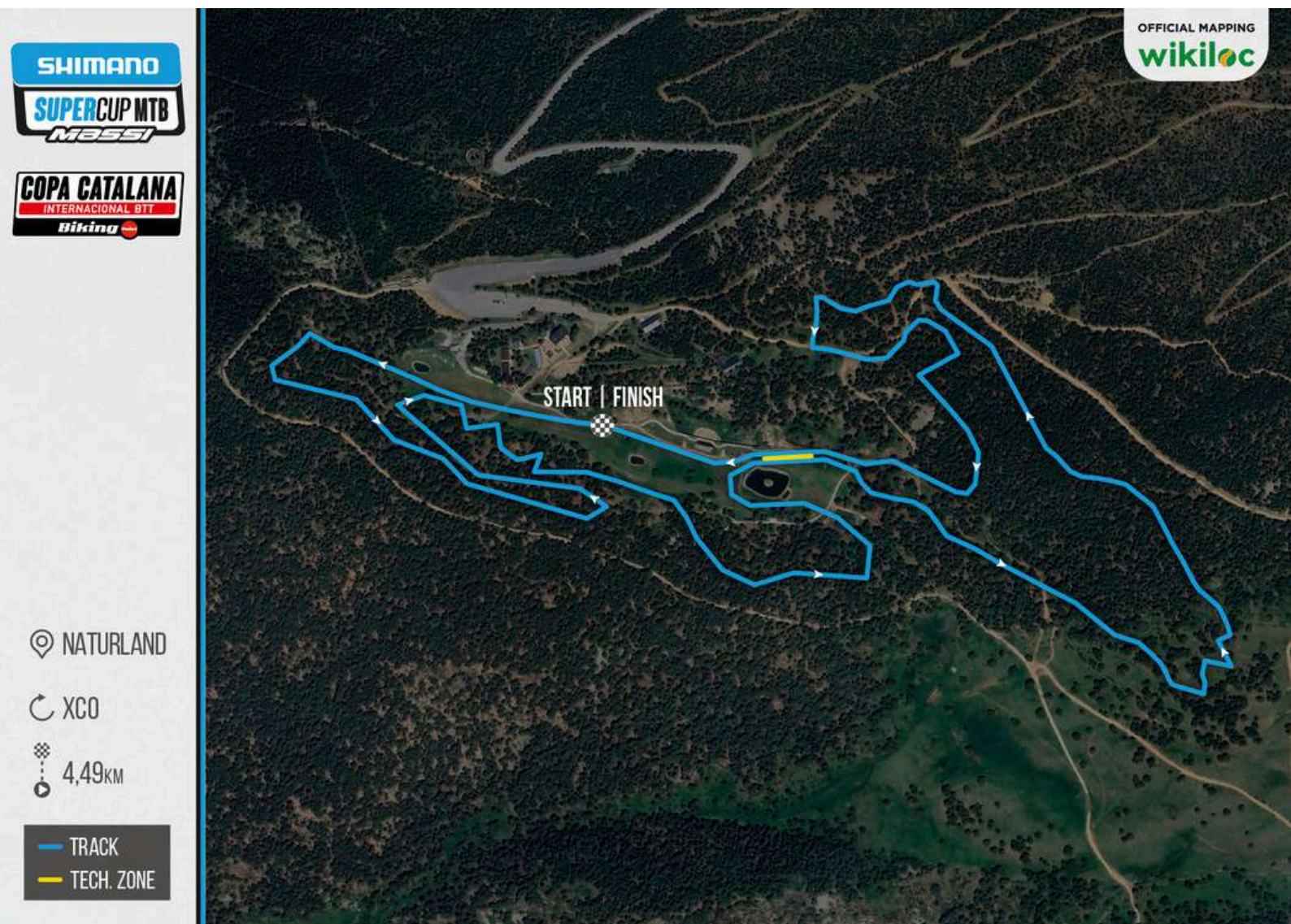
[COPACATALANAINTERNACIONALBTT](https://www.facebook.com/COPACATALANAINTERNACIONALBTT)

[SUPERCUP.CCI](https://www.instagram.com/SUPERCUP.CCI)

WWW.SUPERCUPMTB.COM



TRACK XCO



NATURLAND

XCO

4,49KM

TRACK
TECH. ZONE

TITLE SPONSOR

SHIMANO

MAIN SPONSOR

MASSI

OFFICIAL SPONSOR

INVERSE

Powerbar

SIROKO

OFFICIAL BIKE WASH

PRORIDE
by PROQUIMA

SUPPORTED BY

UCI

EAC

FEDERACIÓ CATALANA
CICLISMO

FEDERACIÓ CATALANA
CICLISME

SHIMANO

COSTA BRAVA | GIRONA
SEA OTTER EUROPE
GARMIN

OFFICIAL MAPPING

wikiloc

ORGANIZING

OCIANSPORT
OUTDOOR EXPERIENCES

WWW.SUPERCUPMTB.COM

COPACATALANAINTERNACIONALBTT

SUPERCUP.CCI

WWW.SUPERCUPMTB.COM

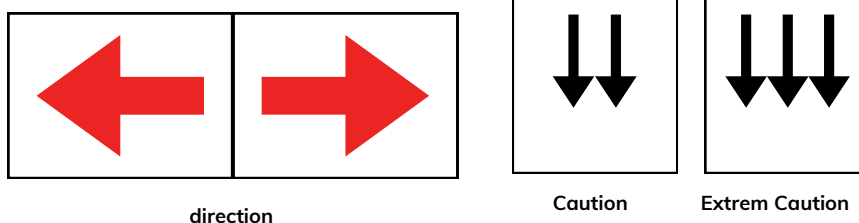


BIB NUMBERS

Participants will collect their race number at the first event they take part in, and must keep it for the entire series. If the bib number is lost, the participant will need to pay €5 to receive a new bib number and, consequently, a new race number.

The official circuit t-shirt will also be given out at this first event.

SIGNAGE



CHAMPIONSHIP SCORING

For the **OVERALL** classification of the Shimano Super Cup Massi, each rider's best 5 results will count.

The points distribution for the championship will be as follows:

CHAMPIONSHIP POINTS							
1	300	26	33	51	18	76	12
2	262	27	33	52	18	77	12
3	232	28	33	53	18	78	12
4	210	29	33	54	18	79	12
5	192	30	33	55	18	80	12
6	180	31	30	56	18	81	9
7	168	32	30	57	18	82	9
8	156	33	30	58	18	83	9
9	142	34	30	59	18	84	9
10	142	35	30	60	18	85	9
11	120	36	27	61	15	86	9
12	114	37	27	62	15	87	9
13	108	38	27	63	15	88	9
14	102	39	27	64	15	89	9
15	96	40	27	65	15	90	9
16	90	41	24	66	15	91	6
17	84	42	24	67	15	92	6
18	78	43	24	68	15	93	6
19	72	44	24	69	15	94	6
20	66	45	24	70	15	95	6
21	60	46	21	71	12	96	6
22	54	47	21	72	12	97	6
23	48	48	21	73	12	98	6
24	42	49	21	74	12	99	6
25	36	50	21	75	12	100	6
						101<	3



PRIZE MONEY

Ranking	PRIZE MONEY					
	HC		C1		C2	
	ELITE M&W	JUNIOR M&W	ELITE M&W	JUNIOR M&W	ELITE M&W	JUNIOR M&W
1	1.000€	200€	600€	130€	250€	80€
2	800€	130€	500€	100€	200€	65€
3	600€	100€	400€	80€	150€	50€
4	500€	80€	300€	65€	125€	30€
5	400€	65€	250€	55€	100€	25€
6	300€	50€	200€	45€	90€	
7	250€	45€	150€	40€	80€	
8	200€	30€	125€	30€	70€	
9	150€	25€	100€	25€	60€	
10	100€	20€	50€	20€	50€	
TOTAL	4.300€	745€	2.675€	590€	1.175€	250€

Prizes will be paid to the winners via bank transfer within a maximum of two months after the race. The procedure to claim the prize will also be posted on the information board at each event.

Winners can send an email to rperez@ocisport.net, providing personal and banking details, so the organization can verify their identity and process the corresponding prize payment.

TITLE SPONSOR

SHIMANO

MAIN SPONSOR

MASSI

OFFICIAL SPONSOR

INVERSE

Powerbar

SIROKO

OFFICIAL BIKE WASH

PRORIDE
by PROQUIMA

SUPPORTED BY

UCI

EOAC
FEDERACIÓ ASSOCIADA DE OCEANIC

CICLISMO

**FEDERACIÓ CATALANA
CICLISME**
1979

SHIMANO

COSTA BRAVA | GIRONA
SEA OTTER EUROPE
GARMIN

OFFICIAL MAPPING

wikiloc

ORGANIZING

OCIANSPORT
OUTDOOR EXPERIENCES

WWW.SUPERCUPMTB.COM

COPACATALANAINTERNACIONALBTT

SUPERCUP.CCI

WWW.SUPERCUPMTB.COM



UCI POINTS

This race is held in accordance with UCI regulations (class 1).
UCI points will be distributed as follows:

UCI POINTS - ONE DAY RACE							
PLACE	HC		C1		C2	XCO JUNIOR	XCO JUNIOR SERIES
	ELITE /U23	U23**	ELITE/ U23	U23**	ELITE/U23	JUNIOR	JUNIOR
1	100	60	60	15	30	20	90
2	80	40	40	10	25	18	70
3	60	30	30	5	15	16	60
4	50	25	25	3	12	14	50
5	40	20	20	1	10	12	40
6	35	18	18	X	8	10	35
7	30	16	16		6	8	30
8	27	14	14		4	6	27
9	24	12	12		2	4	24
10	22	10	10		1	2	22
11	20	8	8		X	X	20
12	18	6	6				18
13	16	4	4				16
14	14	2	2				14
15	12	1	1				12
16	10	X	X				10
17	9						8
18	8						7
19	7						6
20	6						5
21	5						4
22	4						3
23	3						2
24	2						1
25	1						X
26	X						



[CLICK HERE TO VIEW THE FULL REGULATIONS](#)

TITLE SPONSOR

SHIMANO

MAIN SPONSOR

MASSI

OFFICIAL SPONSOR

INVERSE

Powerbar

SIROKO

OFFICIAL BIKE WASH

PRORIDE
by PROQUIMA

SUPPORTED BY

UCI

ECCO
FEDERACIÓ CATALANA DE CICLISME

FEDERACIÓ CATALANA DE CICLISME

FEDERACIÓ CATALANA DE CICLISME

SHIMANO

COSTA BRAVA | GIRONA
SEA OTTER EUROPE
GARMIN

OFFICIAL MAPPING

wikiloc

ORGANIZING

OCIANSPORT
OUTDOOR EXPERIENCES

WWW.SUPERCUPMTB.COM

COPACATALANAINTERNACIONALBT

SUPERCUP.CCI

WWW.SUPERCUPMTB.COM

SCOTT

MARATHON

BTT

1 JUNE NATURLAND

// ANDORRA

PRO | OPEN

XCM

47KM 1.585M+

XCP

33KM 1.088M+



TITLE SPONSOR:



OFFICIAL SPONSORS:



OF. BIKE WASH:



SUPPORTED BY:



OF. MAPPING:



ORGANIZING:



BIKEMARATHONBTT.com



@MARATHONCUPBTT



MARATHONCUP.BTT

REGISTRATIONS

Registration can be completed using the registration form available on the event website until Thursday, May 29th, before the race, at 11:59 PM.

For any questions:

Phone: +34 938 088 091.

Email: hola@ocisport.net



MARATHON CUP MOUNTAIN BIKING WEBSITE

PADDOCK

For teams wishing to make a reservation, there will be a single payment for all Shimano Super Cup Massi 2025 events.

For the Super Cup Youth event, paddock space reservations can also be made.

The paddock reservation form can be filled out online or by email: hola@ocisport.net



TITLE SPONSOR:



OFFICIAL SPONSORS:



OF. BIKE WASH:



SUPPORTED BY:



OF. MAPPING:



ORGANIZING:



BIKEMARATHONBTT.com



[@MARATHONCUPBTT](https://www.facebook.com/MARATHONCUPBTT)



[MARATHONCUP.BTT](https://www.instagram.com/MARATHONCUPBTT)



PRESENTATION

With over ten years of history, the Marathon Cup has established itself as one of the benchmark competitions for mountain bike enthusiasts. This championship attracts cyclists not only for the challenges and beauty of its courses, but also for its unique atmosphere, which combines the intensity of the competition with a friendly and welcoming atmosphere for participants and spectators. It is an event that inspires a sporting spirit and a love of nature.

Naturland: Stage of the Second 2025 Race

The town of Naturland, located in Andorra, will host the second race of the 2025 Marathon Cup. Known for its extraordinary natural beauty and world-class adventure sports facilities, this location offers the perfect setting for a high-level competition.

Participants will enjoy spectacular landscapes, challenging slopes, and a course designed to test both endurance and technique. The public will also have the opportunity to experience the race.



TITLE SPONSOR:



OFFICIAL SPONSORS:



OF. BIKE WASH:



SUPPORTED BY:



OF. MAPPING:



ORGANIZING:



BIKEMARATHONBTT.com



@MARATHONCUPBTT



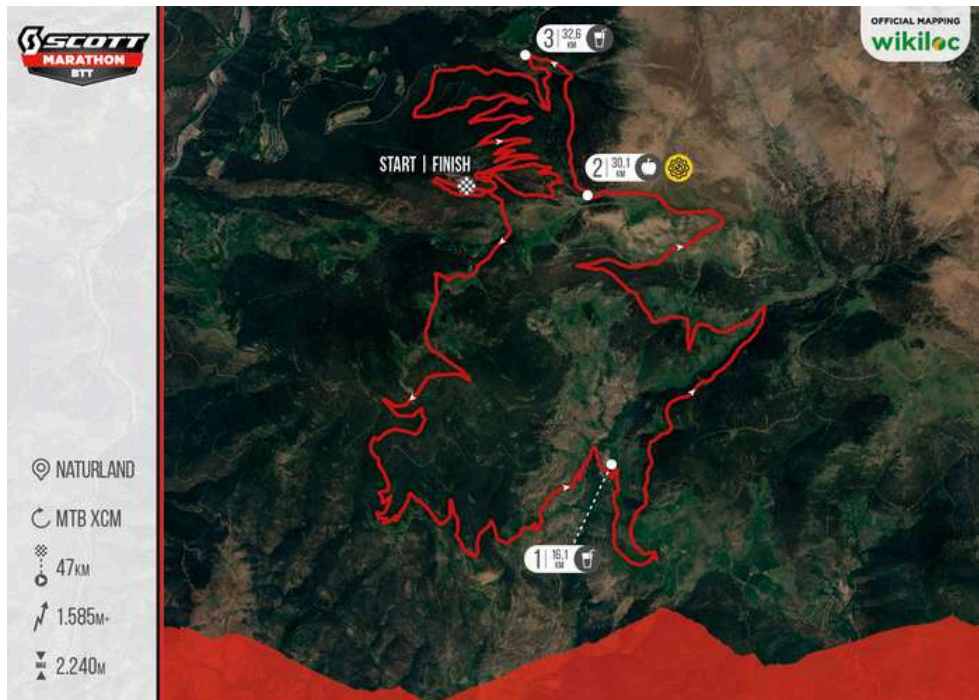
MARATHONCUP.BTT



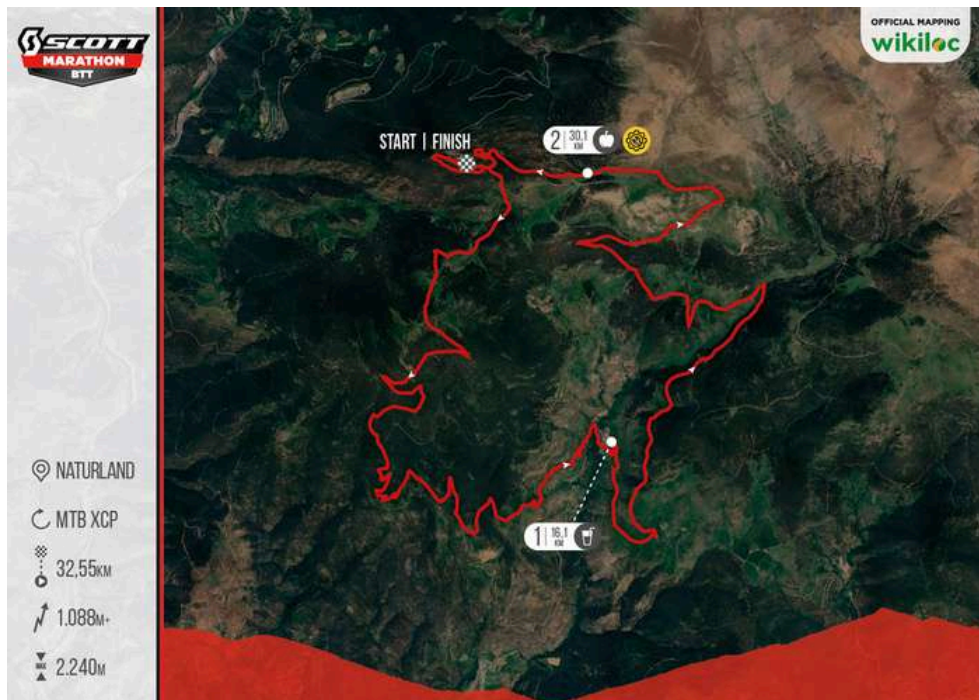
TRACKS

Two exclusive circuits that offer spectacular routes and unique landscapes:

XCM



XCP



TITLE SPONSOR:



OFFICIAL SPONSORS:



OF. BIKE WASH:



SUPPORTED BY:



OF. MAPPING:



ORGANIZING:



BIKEMARATHONBTT.com



@MARATHONCUPBTT



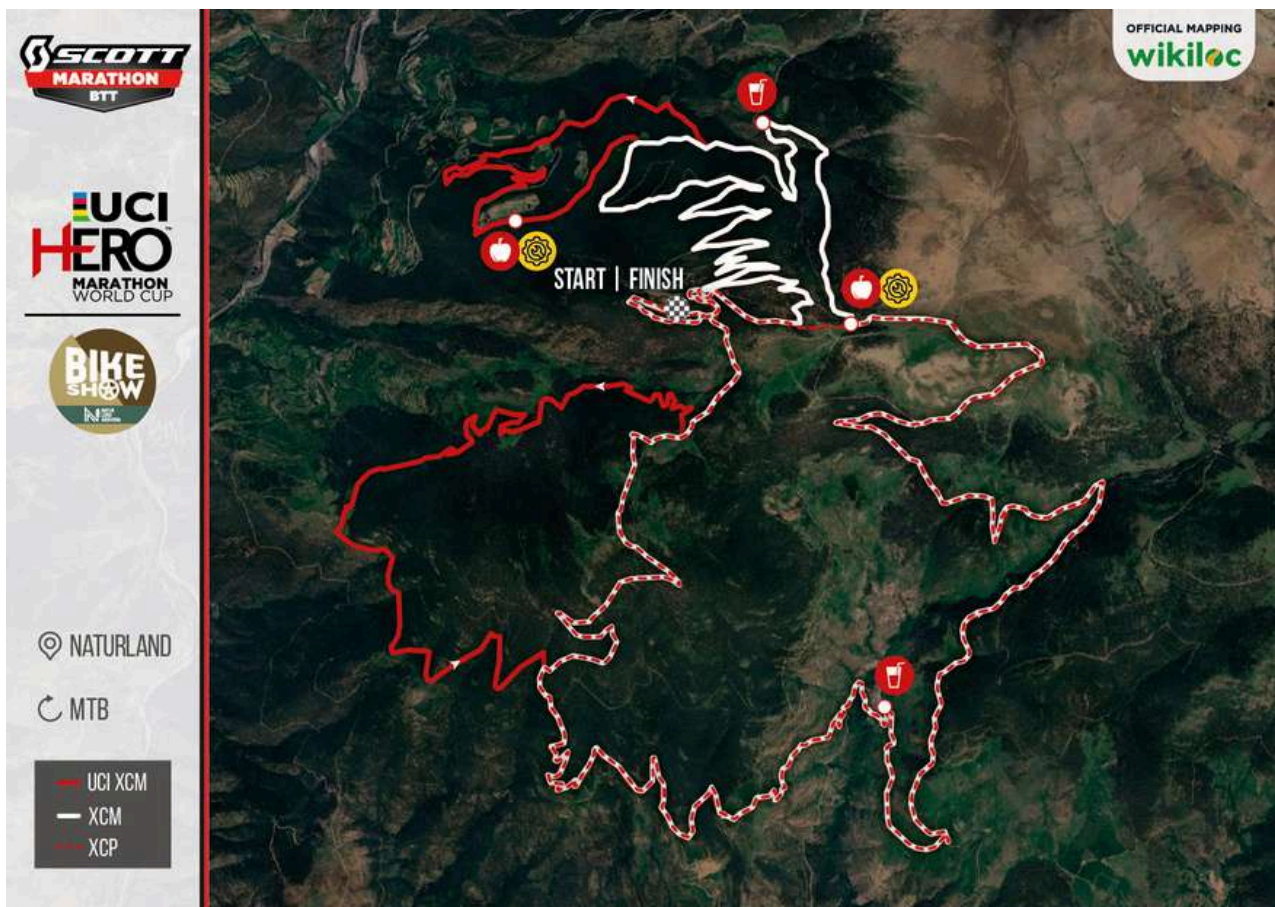
MARATHONCUP.BTT



TRACKS

Here is the map that mix the 3 tracks of all the marathon races that will be located in the same race at 1st of june:

- Hero UCI World Cup Marathon Naturland (starts at 8:30h am)
- Scott Marathon Cup Btt XCM & XCP (starts at 9:30h am)



TITLE SPONSOR:



OFFICIAL SPONSORS:



OF. BIKE WASH:



SUPPORTED BY:



OF. MAPPING:



ORGANIZING:



BIKEMARATHONBTT.com



@MARATHONCUPBTT



MARATHONCUP.BTT



INFORMATION

CATEGORIES

XCM (PRO)

Participants in this category must have a UCI license, processed through the corresponding Federation. The minimum age to participate in this category is **19 years** of age in the year of the race.

Women: Elite, Under 23, Master 30, Master 40, and Master 50/60.

Men: Elite, Under 23, Master 30, Master 40, and Master 50/60.

XCP (PRO)

Participants in this category must have a UCI license, processed through the corresponding Federation. The minimum age to participate in this category is **16 years** old in the year of the race.

Women: Elite, Under 23, Junior, Master 30, Master 40, and Master 50/60.

Men: Elite, Under 23, Junior, Master 30, Master 40, and Master 50/60.

OPEN / POPULAR:

MARATHON CUP BTT 2025

This category is open to amateur participants, both men and women, who turn 16 or older during the year of the race. These riders can participate with a UCI federation license or a day license.

TITLE SPONSOR:



OFFICIAL SPONSORS:



OF. BIKE WASH:



SUPPORTED BY:



OF. MAPPING:



ORGANIZING:



BIKEMARATHONBTT.com



@MARATHONCUPBTT



MARATHONCUP.BTT

REGULATION

You can find all the information about the regulations through the following link:

<https://bikemarathonbtt.com/en/rules>

The scoring for the championship will be as follows:

CHAMPIONSHIP POINTS							
1	300	26	33	51	18	76	12
2	262	27	33	52	18	77	12
3	232	28	33	53	18	78	12
4	210	29	33	54	18	79	12
5	192	30	33	55	18	80	12
6	180	31	30	56	18	81	9
7	168	32	30	57	18	82	9
8	156	33	30	58	18	83	9
9	142	34	30	59	18	84	9
10	142	35	30	60	18	85	9
11	120	36	27	61	15	86	9
12	114	37	27	62	15	87	9
13	108	38	27	63	15	88	9
14	102	39	27	64	15	89	9
15	96	40	27	65	15	90	9
16	90	41	24	66	15	91	6
17	84	42	24	67	15	92	6
18	78	43	24	68	15	93	6
19	72	44	24	69	15	94	6
20	66	45	24	70	15	95	6
21	60	46	21	71	12	96	6
22	54	47	21	72	12	97	6
23	48	48	21	73	12	98	6
24	42	49	21	74	12	99	6
25	36	50	21	75	12	100	6
						101<	3

TITLE SPONSOR:



OFFICIAL SPONSORS:



OF. BIKE WASH:



SUPPORTED BY:



OF. MAPPING:



ORGANIZING:



BIKEMARATHONBTT.com



@MARATHONCUPBTT



MARATHONCUP.BTT

AWARDS

In each event, there will be trophies for the top three finishers in each category, in both XCM and XCP categories, and prize money, depending on the event category for the XCM category.

In the final event, a trophy will also be awarded to the top three finishers in the final Marathon Cup BTT classification for each category.

The leader's jersey will be awarded to the top-placed male and female finishers in the XCM category of each event, except in the final event, where the leader's jersey will be awarded to the top-placed male and female finishers in each category within each XCM and XCP category.

Prizes money for the event (Male/Female):

PLACE	CLASS 1
	XC
	M&W ELITE
1	600€
2	500€
3	400€
4	300€
5	250€
6	200€
7	150€
8	125€
9	100€
10	50€
TOTAL	2.675€

UCI XCM points:

PLACE	CLASS 1
	ELITE/ U23
1	100
2	90
3	70
4	60
5	50
6	40
7	30
8	20
9	10
10	5
11	X

TITLE SPONSOR:



OFFICIAL SPONSORS:



OF. BIKE WASH:



SUPPORTED BY:



OF. MAPPING:



ORGANIZING:



BIKEMARATHONBTT.com



@MARATHONCUPBTT



MARATHONCUP.BTT

UCI HEROTM

MARATHON WORLD CUP



1 JUNY

NATURLAND | ANDORRA

INSTITUTIONAL SPONSORS:



SANT JULIÀ
DE LÒRIA



Andorra

TITLE SPONSOR:



SPONSOR SERIES:



OFFICIAL SPONSORS:



OF. BIKE WASH:



SUPPORTED BY:



OF. MAPPING:



ORGANIZING:



REGISTRATIONS

Registration can be completed through the official UCI HERO Marathon World Cup website.

For any questions, please contact:

Phone: +34 938 088 091.

Email: hola@ocisport.net

Registration closes 7 days before the event, on Friday at 11:59 p.m.

HERO UCI REGISTRATIONS

The World Cup course shown below is a circuit that can also be run in OPEN mode:

REGISTRATION FOR THE HERO UCI OPEN

PADDOCK

Teams wishing to reserve a paddock space must do so via the following email address:

Alexandra.ploner@heroucimarathonworldcup.com

Surface area can be requested at 30€/m²

INSTITUTIONAL SPONSORS:



TITLE SPONSOR:



SPONSOR SERIES:



OFFICIAL SPONSORS:



OF. BIKE WASH:



SUPPORTED BY:



OF. MAPPING:



ORGANIZING:



PRESENTATION

This is a unique event that, due to its geographical location and place on the calendar, will attract many of the discipline's best riders. The race will feature a spectacular route that will take cyclists along the roads and trails of the stunning Pyrenean landscapes. The race is part of the Bike Show Naturland, an exceptional event where cycling enthusiasts can enjoy a weekend full of cycling activities, including the Shimano Super Cup Massi, the MTB Marathon Cup, the UCI XCM World Cup, and the Youth Super Cup for young riders.

Naturland Andorra

The heart of the Pyrenees baptizes the rhythm of a vast natural paradise.

The race takes place among the peaks, valleys, and forests of one of the continent's great natural paradises, the Pyrenees. At the heart of this enclave is Naturland (Andorra), which has become a benchmark for cyclists and outdoor recreation enthusiasts. Breathtaking views, an inspiring landscape, and an icon of the most beautiful nature.



INSTITUTIONAL SPONSORS:



SANT JULIÀ
DE LÒRIA



TITLE SPONSOR:



SPONSOR SERIES:



OFFICIAL SPONSORS:



OF. BIKE WASH:



SUPPORTED BY:



OF. MAPPING:



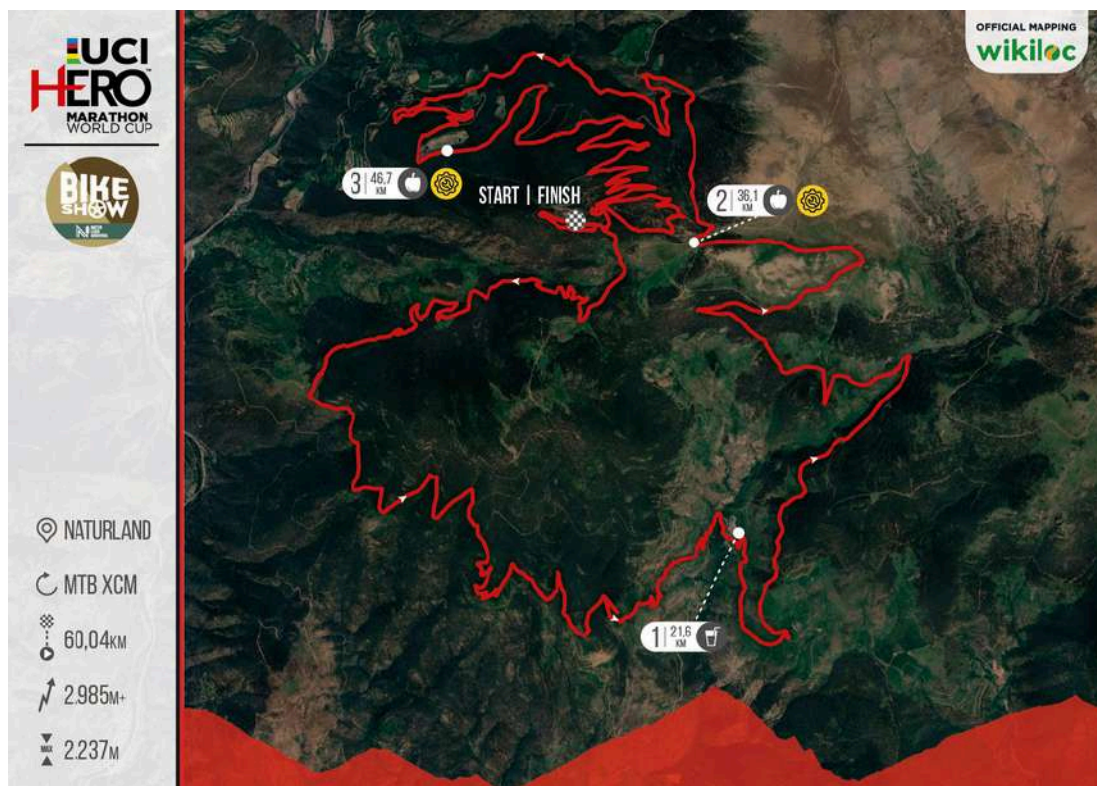
ORGANIZING:



CIRCUIT

The race route is 60,04 km long and has elevation gain of 2,985 meters. This route follows trails and paths that crisscross the landscapes of the Pyrenees, providing participants with a unique experience.

Starting from the Naturland Cota2000 site, at km 1.6, we cross into Catalonia for a 7km descent along a track towards Arcavell to an altitude of 1300m. We glide until we reach the village of Bescaran (km 21), where we find a refreshment point to face a 13km climb to km 33 at an altitude of 2200m. Here we re-enter Andorran territory, where we have a technical team section. Afterwards, the most technical part of the route begins with a downhill trial to an altitude of 1400m with another refreshment point, where we begin to climb, alternating between trail and road, to reach an altitude of 2000m, where we reach the finish line.



INSTITUTIONAL SPONSORS:



SANT JULIÀ
DE LÒRIA



TITLE SPONSOR:



SPONSOR SERIES:



OFFICIAL SPONSORS:



OF. BIKE WASH:



SUPPORTED BY:



OF. MAPPING:



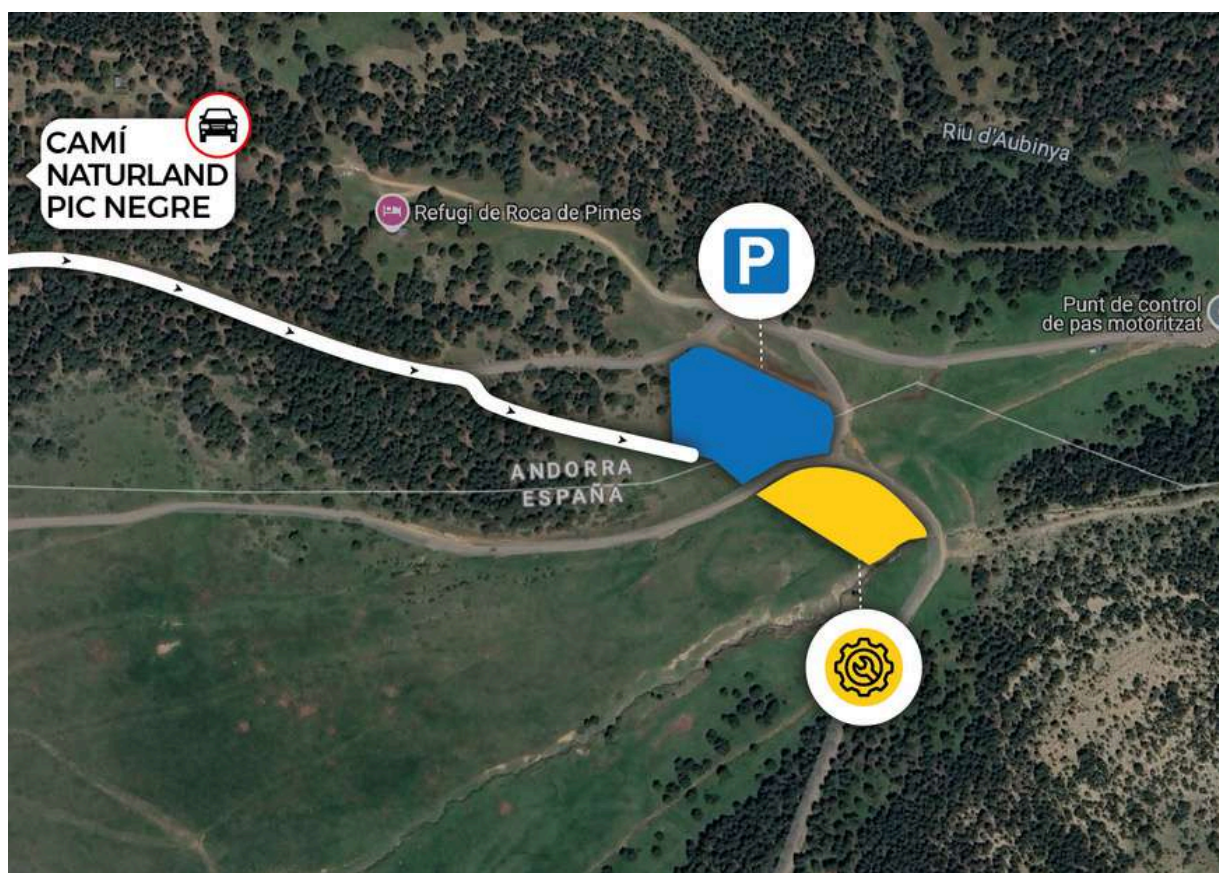
ORGANIZING:



FEED ZONES

LIQUID + SOLID feed zone point+ TECHNICAL ZONE (mechanical assistance)

- Coordinates: 42°25'59.9"N 1°32'15.3"E
- Link maps: <https://maps.app.goo.gl/8UhydtPAr9zwMwv1A>



INSTITUTIONAL SPONSORS:



SANT JULIÀ
DE LÒRIA



TITLE SPONSOR:



SPONSOR SERIES:



OFFICIAL SPONSORS:



OF. BIKE WASH:



SUPPORTED BY:



OF. MAPPING:



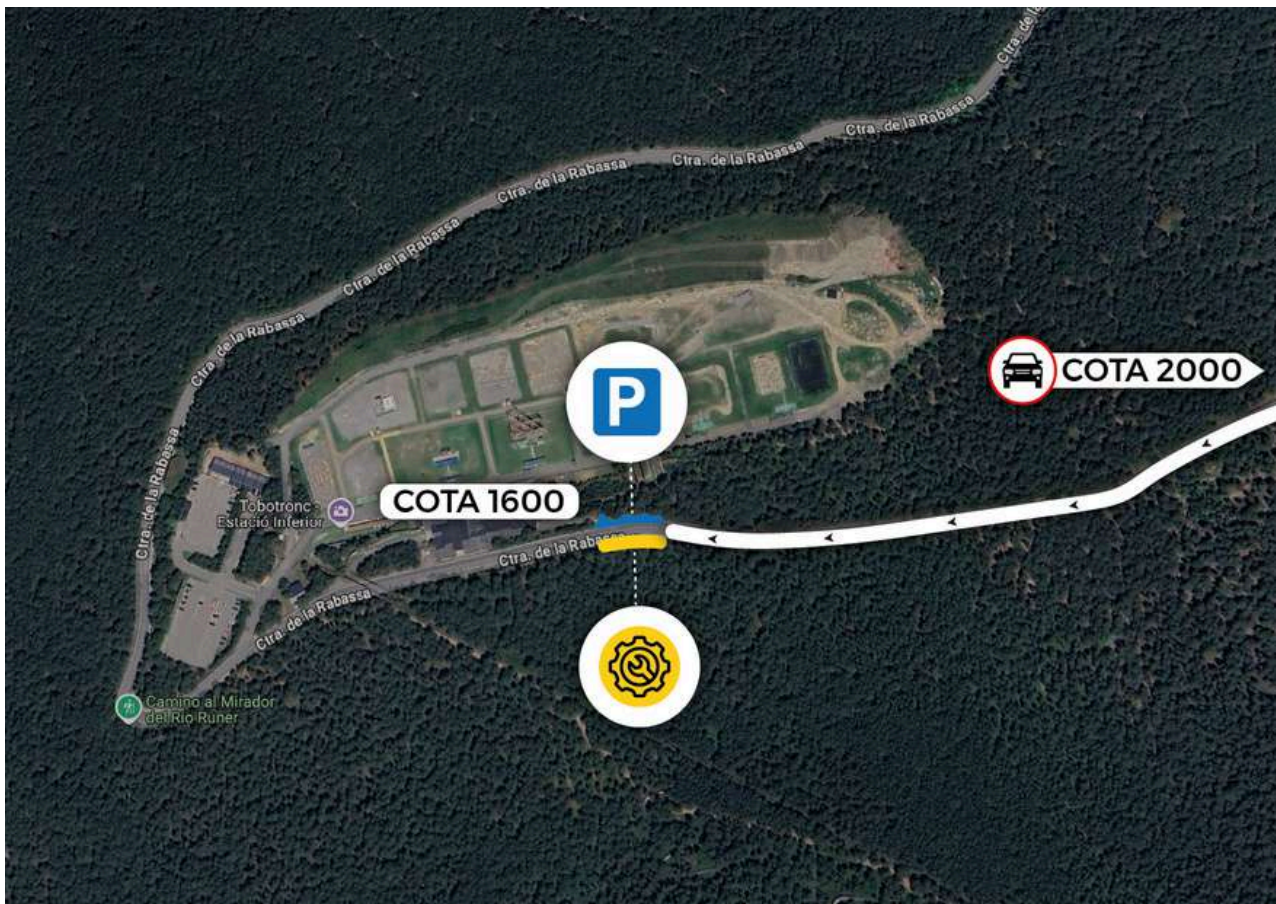
ORGANIZING:



FEED ZONES

LIQUID + SOLID feed zone point

- Coordinates: 42°26'31.2"N 1°30'14.1"E
- Link map: [https://www.google.com/maps/place/42%C2%B026'31.2%22N+1%C2%B030'14.1%22E/@42.442007,\[...\]d1.503903?entry=tту&g_ep=EgoyMDI1MDUxNS4wIKXMDSoASAFQAw%3D%3D](https://www.google.com/maps/place/42%C2%B026'31.2%22N+1%C2%B030'14.1%22E/@42.442007,[...]d1.503903?entry=tту&g_ep=EgoyMDI1MDUxNS4wIKXMDSoASAFQAw%3D%3D)



INSTITUTIONAL SPONSORS:



TITLE SPONSOR:



SPONSOR SERIES:



OFFICIAL SPONSORS:



OF. BIKE WASH:



SUPPORTED BY:



OF. MAPPING:



ORGANIZING:





INFORMATION

CATEGORIES

- Individual
- ELITE male / female
- MASTER male / female

UCI licenses are mandatory for a rider to compete in each race of the UCI Marathon World Cup.

SCORE AND CLASSIFICATION

The updated results of the HERO UCI World Cup will be published on the Monday after each race. This information can be viewed on the websites www.uci.org / www.heroucimarathonworldcup.com.

The following points will be awarded for each position, from 1 to 60, respectively.

The UCI ranking points will be directly linked to the placing achieved in each race. Each participant in the HERO UCI Marathon Cross Country World Cup will accumulate points for the overall series classification.

After the five races, the overall leader will be the rider with the highest overall score.

INSTITUTIONAL SPONSORS:



TITLE SPONSOR:



SPONSOR SERIES:



OFFICIAL SPONSORS:



OF. BIKE WASH:



SUPPORTED BY:



OF. MAPPING:



ORGANIZING:



SCORE TABLE

250 1st place	74 16th place	44 31st place	22 46th place
200 2nd place	72 17th place	42 32nd place	21 47th place
160 3rd place	70 18th place	40 33rd place	20 48th place
150 4th place	68 19th place	38 34th place	19 49th place
140 5th place	66 20th place	36 35th place	18 50th place
130 6th place	64 21st place	34 36th place	17 51st place
120 7th place	62 22nd place	32 37th place	16 52nd place
110 8th place	60 23rd place	30 38th place	15 53rd place
100 9th place	58 24th place	29 39th place	14 54th place
95 10th place	56 25th place	28 40th place	13 55th place
90 11th place	54 26th place	27 41st place	12 56th place
85 12th place	52 27th place	26 42nd place	11 57th place
80 13th place	50 28th place	25 43rd place	10 58th place
78 14th place	48 29th place	24 44th place	9 59th place
76 15th place	46 30th place	23 45th place	8 60th place

INSTITUTIONAL SPONSORS:



TITLE SPONSOR:



SPONSOR SERIES:



OFFICIAL SPONSORS:



OF. BIKE WASH:



SUPPORTED BY:



OF. MAPPING:



ORGANIZING:



CASH PRIZES

The following cash prizes are awarded for the different stages of the Hero UCI Marathon World Cup

XCM
1'500 €
1'200 €
900 €
750 €
600 €
450 €
375 €
300 €
150 €
75 €
6'300 €

The following financial prizes are awarded to the overall elite men/women ranking:

Position Prize (€)

1st	5,000.00
2nd	3,000.00
3rd	2,000.00
4th	1,500.00
5th	1,000.00

All prize money from the HERO UCI World Cup Final is subject to taxes and withholdings.

Prize money from individual races will comply with UCI regulations.

RULES HERO UCI

INSTITUTIONAL SPONSORS:



TITLE SPONSOR:



SPONSOR SERIES:



OFFICIAL SPONSORS:



OF. BIKE WASH:



SUPPORTED BY:



OF. MAPPING:



ORGANIZING:



INSTITUTIONAL SPONSORS



SPONSORS SUPER CUP



SPONSORS CCI



SPONSORS MARATHON CUP



SPONSORS WORLD CUP



OFFICIAL BIKE WASH



SUPPORTED BY



OFFICIAL MAPPING



ORGANIZING

