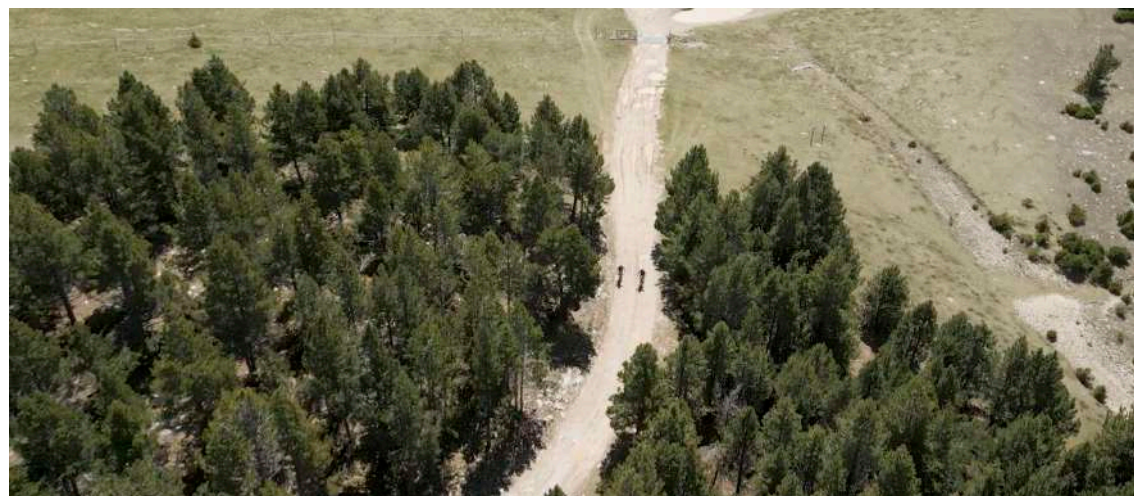




DISCOVER  
AN IDEAL  
TERRITORY FOR  
MOUNTAIN BIKE



# BIKER'S GUIDE 2024



SPONSORS SUPERCUP:



SPONSORS MARATHON BTT:



OF. SPONSOR:



OF. BIKE WASH:



TECH. PARTNER:



OF. MAPPING:



SUPPORTED BY:



ORGANIZING:







# SUBLIM

AN EVENT IN ANDORRA BY  
CIRQUE DU SOLEIL®



06.07.24 > 04.08.24

Nou espectacle exclusiu creat per a Andorra.  
Nuevo espectáculo exclusivo creado para Andorra.  
New and exclusive event created for Andorra.

TICKETS & i



visitandorra.com

Andorra



## Andorra Turisme

### SUBLIM by Cirque du Soleil

From 6 July to 4 August, Cirque du Soleil returns to Andorra with a new exclusive show.

On this occasion we invite you to enter our atelier to experience SUBLIM: a unique spectacle with elegant stage design, glamorous costumes and extravagant acrobatics.

Don't wait any longer and book your tickets!

TICKETS





# 1 INTRODUCTION

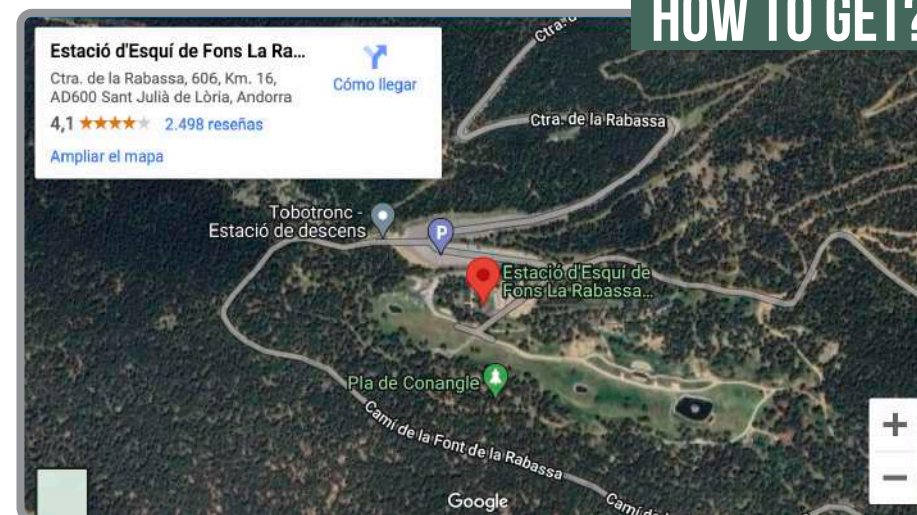


On the weekend of **June 15 and 16**, we are moving cycling to Andorra, to **Naturland**, an ideal space to enjoy cycling in the mountains of Andorra, spaces adapted to all levels, whether you are a **beginner or an expert**, or if you prefer come with the **family**, here you will find the adrenaline you are looking for between the landscapes of La Rabassa and Sant Julià de Lòria.

We will be able to enjoy authentic MTB with the **Shimano Super Cup Massi** and the participants of the **Marathon Cup BTT** and there will also be time for the little ones with the **XCO Super Cup Youth** competition, for the pre-Benjamin to Infant categories.

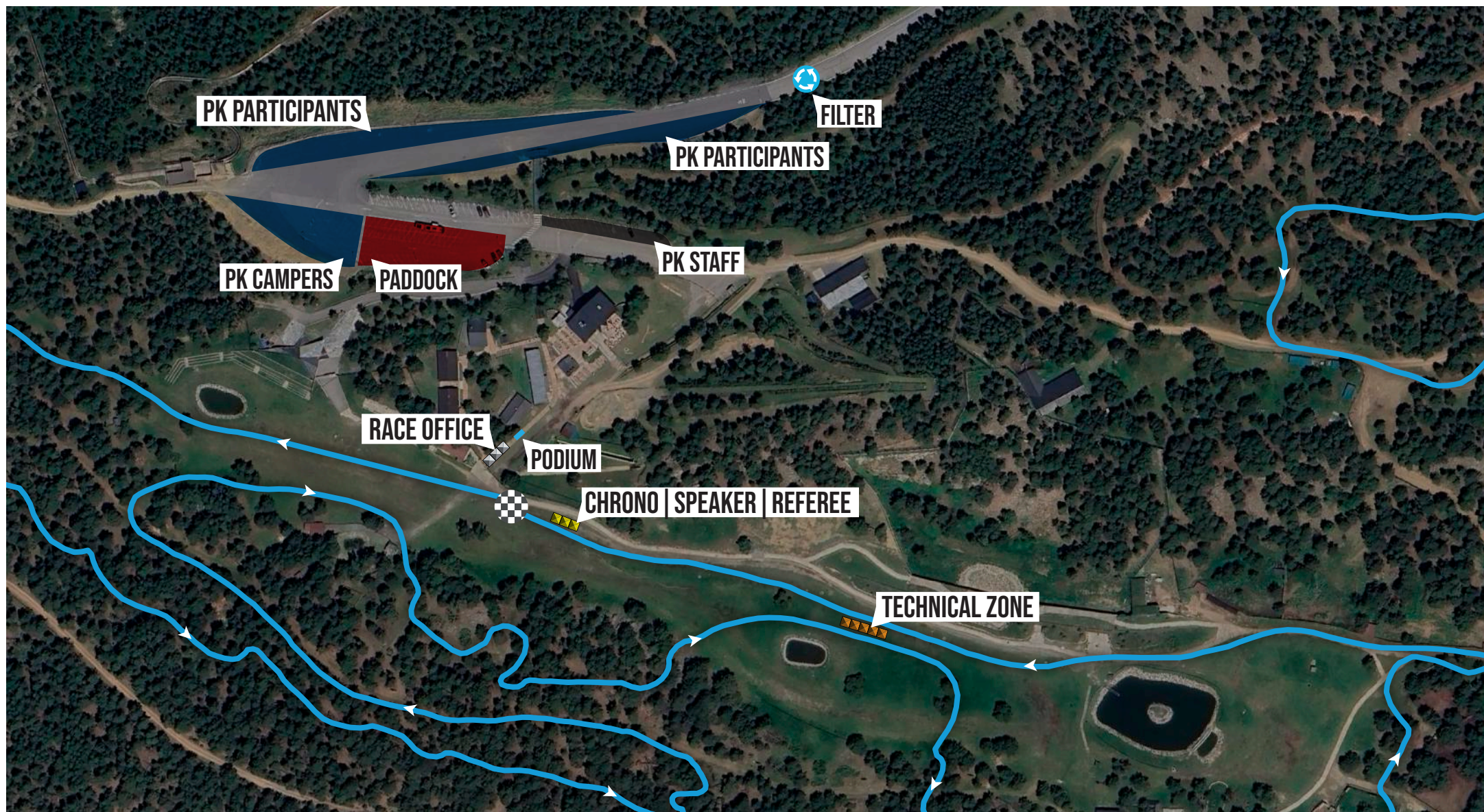
It will be a complete weekend in a privileged space and also **located in the facilities of the adventure park**.

## HOW TO GET?





# 2 VILLAGE





# 3 SCHEDULE



## SATURDAY 15<sup>TH</sup> JUNE



**09:00-18:00h** Race office opening  
(until 30 minutes before each race)  
**10:00h** Start PRE BENJAMÍN  
**10:15h** Start BENJAMÍN  
**10:30h** Start PRINCIPIANTE  
**10:55h** Start ALEVÍN  
**11:45h** Start INFANTIL  
**12:30h** Ceremony awards

## SATURDAY 15<sup>TH</sup> JUNE



**09:00-18:00h** Race office opening  
(until 30 minutes before each race)  
**14:00h** 1<sup>st</sup> Start: WOMEN RACE (all categories)  
**15:40h** 2<sup>nd</sup> Start: CADET | M30-40-50-60  
**15:45h** Ceremony awards of women race  
**17:30h** 3<sup>rd</sup> Start: ELITE | U23 | JUNIOR  
**19:00h** Ceremony awards

## SUNDAY 16<sup>TH</sup> JUNE



**08:00h** Race office opening  
**09:30h** Start XCM (PRO)  
**09:35h** Start XCM (OPEN) | XCP | E-BIKES  
**13:00h** Ceremony awards





# 4 SUPER CUP YOUTH



The **Super Cup Youth** in Naturland (Andorra) is the **fourth** race of the year. There will be **three different circuits**, one for the Pre Benjamin and Benjamin categories, one for the Principiante and another one for the Alevín and Infantil categories.

The **smaller categories are not competitive**, since the main objective is to promote sport among the little ones. Everyone will have a participation medal, but in the **Infantil, Alevín and Principiante categories**, prizes will be awarded to the **first three** in each category.

In the first test in which you participate in the circuit, the bib number is collected and it will be the same for the following circuit tests of the season.

*In case of loss, 5 euros will be charged for the re-assignment of the participant's number and the new plate.*

AGE	CATEGORY
5-6	PRE BENJAMÍN
7-8	BENJAMÍN
9-10	PRINCIPIANTE
11-12	ALEVÍN
13-14	INFANTIL

[RULES](#)





# 4 SUPER CUP YOUTH



INFANTIL  
ALEVI

📍 NATURLAND

🔄 MTB XCO

🏁 1,6KM

— TRACK  
— TECH. ZONE

OFFICIAL MAPPING  
**wikiloc**





# 4 SUPER CUP YOUTH



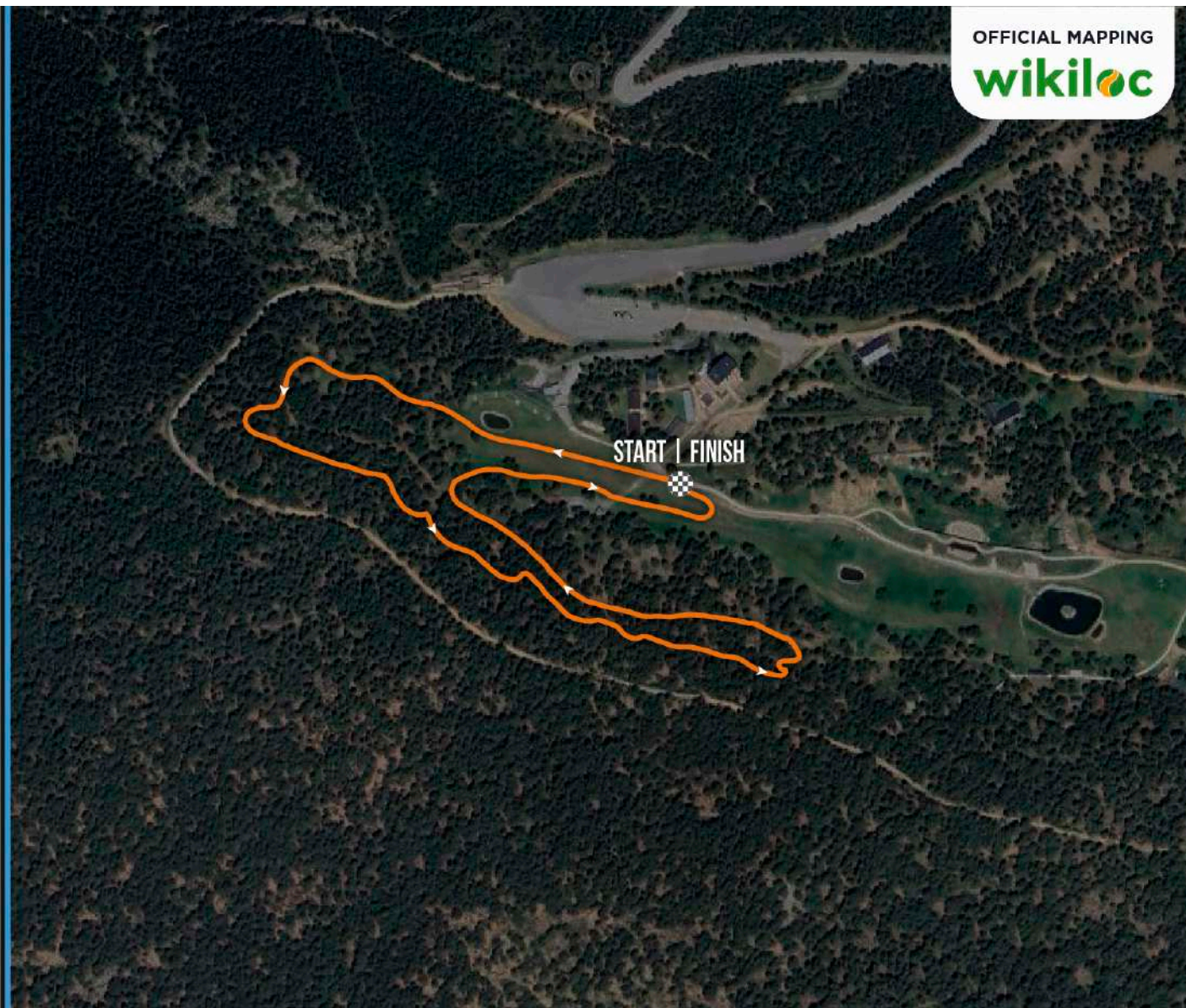
OFFICIAL MAPPING  
**wikiloc**

**PRINCIPIANT**

📍 NATURLAND

🔄 MTB XCO

🏁 1,3KM





# 4 SUPER CUP YOUTH



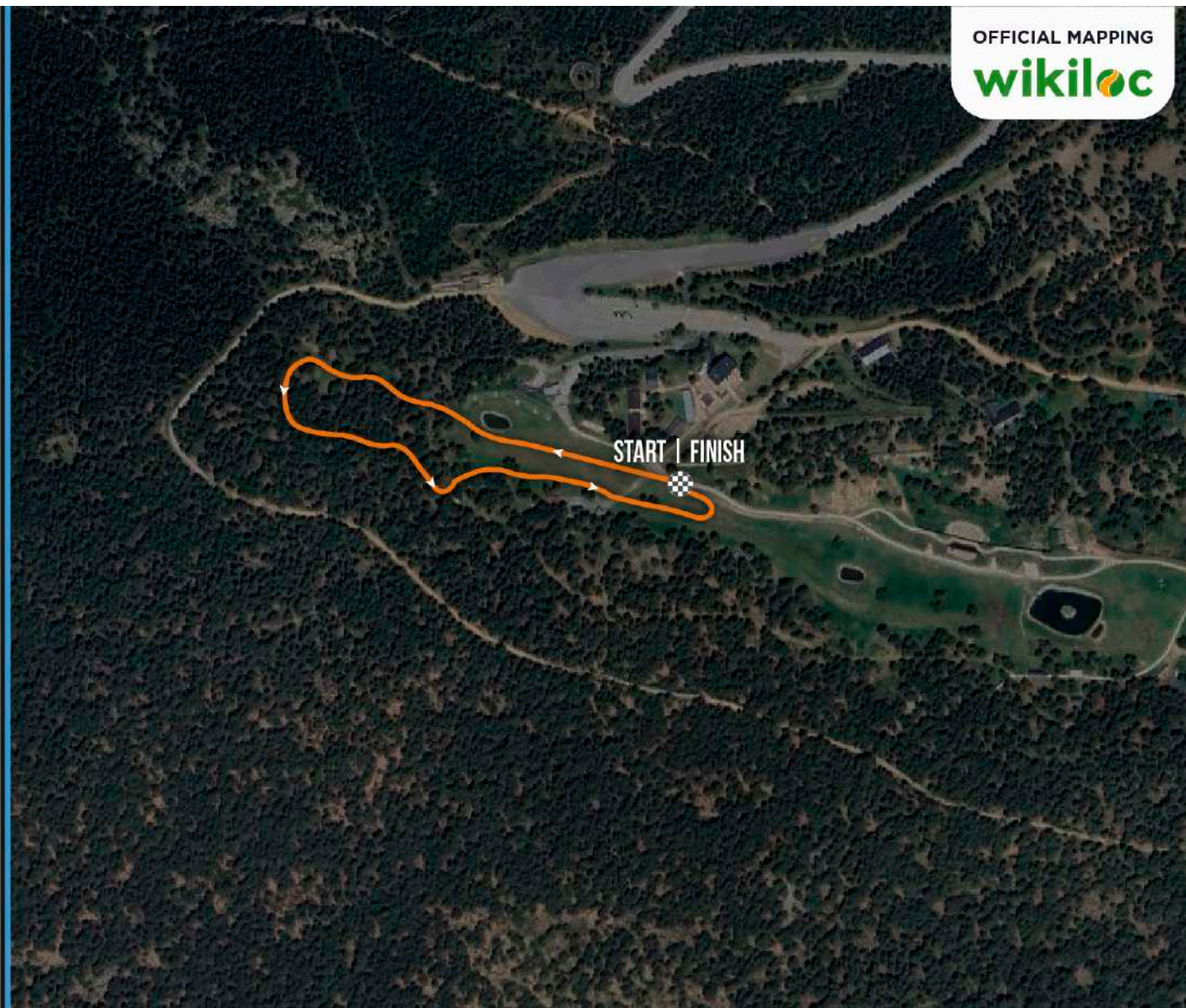
**BENJAMÍ**  
**PRE-BENJAMÍ**

📍 NATURLAND

🔄 MTB XCO

🏁 0,6KM

OFFICIAL MAPPING  
**wikiloc**





# 5 SHIMANO SUPER CUP MASSI



Shimano Super Cup Massi, is the **reference Mountain Bike competition in the world**. Since its birth in 2002, the prestigious entity has grown spectacularly. After a long career, it is the **second circuit with the most points worldwide**.

Circuit of 7 UCI category XCO events and **points for the World ranking**.

This 2024 Shimano Super Cup Massi **returns to Andorra** to be held in the **new headquarters at Naturland**, of a demanding **UCI C2** race at high altitude.

In the first test in which you participate in the circuit, the bib number is collected and it will be the same for the following circuit tests of the season.

***In case of loss, 5 euros will be charged for the re-assignment of the participant's number and the new plate.***

At the first test, each participant will also be given the circuit's gift t-shirt.

[RULES](#)





# 5 SHIMANO SUPER CUP MASSI



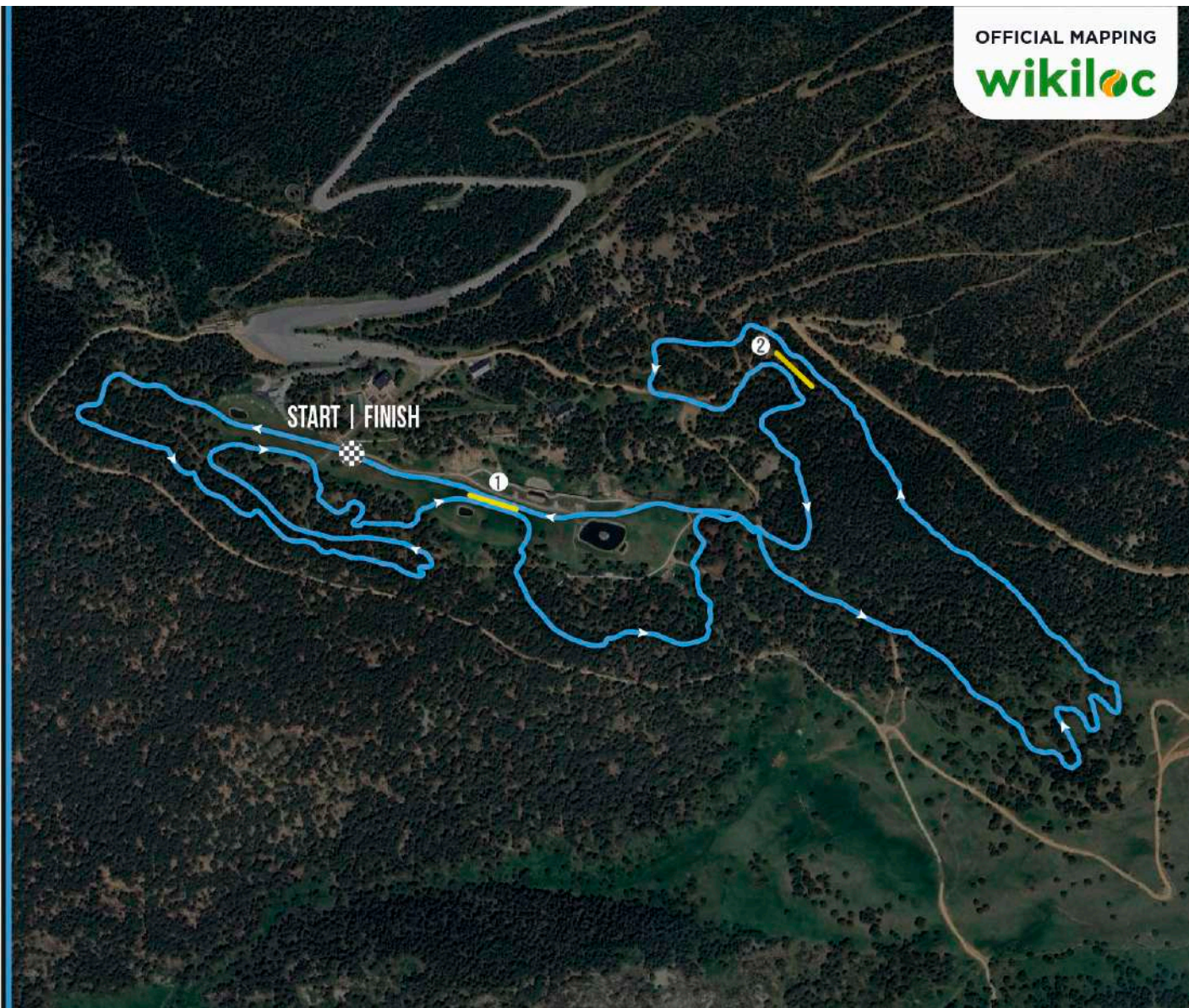
OFFICIAL MAPPING  
**wikiloc**

📍 NATURLAND

🔄 XCO

📏 4,62km

— TRACK  
— TECH. ZONE





# 5 SHIMANO SUPER CUP MASSI



## SCORING

For the General Classification of the Shimano Super Cup Massi 2024, the 6 best results of each rider will be taken into account.

The distribution of points for the championship will be as follows:

CHAMPIONSHIP POINTS							
1	300	26	33	51	18	76	12
2	262	27	33	52	18	77	12
3	232	28	33	53	18	78	12
4	210	29	33	54	18	79	12
5	192	30	33	55	18	80	12
6	180	31	30	56	18	81	9
7	168	32	30	57	18	82	9
8	156	33	30	58	18	83	9
9	142	34	30	59	18	84	9
10	142	35	30	60	18	85	9
11	120	36	27	61	15	86	9
12	114	37	27	62	15	87	9
13	108	38	27	63	15	88	9
14	102	39	27	64	15	89	9
15	96	40	27	65	15	90	9
16	90	41	24	66	15	91	6
17	84	42	24	67	15	92	6
18	78	43	24	68	15	93	6
19	72	44	24	69	15	94	6
20	66	45	24	70	15	95	6
21	60	46	21	71	12	96	6
22	54	47	21	72	12	97	6
23	48	48	21	73	12	98	6
24	42	49	21	74	12	99	6
25	36	50	21	75	12	100	6
						101<	3

## UCI POINTS

UCI points shall be distributed, depending on the category, as follows:

ONE DAY RACE							
PLACE	HORS CLASS		CLASS 1		CLASS 2	XCO JUNIOR	XCO JUNIOR SERIES
	ELITE/ U23	U23**	ELITE/ U23	U23**	ELITE/ U23	JUNIOR	JUNIOR
1	100	60	60	15	30	20	90
2	80	40	40	10	25	18	70
3	60	30	30	5	15	16	60
4	50	25	25	3	12	14	50
5	40	20	20	1	10	12	40
6	35	18	18	X	8	10	35
7	30	16	16		6	8	30
8	27	14	14		4	6	27
9	24	12	12		2	4	24
10	22	10	10		1	2	22
11	20	8	8		X	X	20
12	18	6	6				18
13	16	4	4				16
14	14	2	2				14
15	12	1	1				12
16	10	X	X				10
17	9						8
18	8						7
19	7						6
20	6						5
21	5						4
22	4						3
23	3						2
24	2						1
25	1						X
26	X						

## CASH PRIZES

Prizes will be paid to the corresponding winners by bank transfer within two months after the race. The information panel for each test will also inform you of the procedure to receive the prize:

If you are one of the winners, you can write an email to the address: [rperez@ocisport.net](mailto:rperez@ocisport.net) providing your personal and bank credentials (DNI and bank details), so that the organization can validate the identity and make the corresponding bank transfer to award obtained.

Class 2 / Classe 2	
XC	
M&W ELITE	M&W JUNIOR
250€	80€
200€	65€
150€	50€
125€	30€
100€	25€
90€	
80€	
70€	
60€	
50€	
1,175€	250€



# 6 MARATHON CUP BTT



The **Marathon Cup BTT** is a circuit with more than 10 years that combines **competition** and “good vibes” for MTB lovers.

A series of exclusive tests, with good routes and **areas that allow participants to enjoy around the territory.**

This year, the championship **crosses borders** to compete in one of its events in **Naturland, Andorra**. A **high mountain venue** that will make the tours pass through fantastic places that **will leave all participants speechless.**

Participants in the PRO category who have participated in any of the circuit events will have to wear the number assigned to them.

RULES



## SCORING

For the final classification of the Marathon Cup BTT, both individual and team, the 4 races will score points. In case of a tie on points, the best result between the tied riders in the last race will be taken into account. Points will be distributed as follows:

CHAMPIONSHIP POINTS									
1	300	26	33	51	18	76	12		
2	262	27	33	52	18	77	12		
3	232	28	33	53	18	78	12		
4	210	29	33	54	18	79	12		
5	192	30	33	55	18	80	12		
6	180	31	30	56	18	81	9		
7	168	32	30	57	18	82	9		
8	156	33	30	58	18	83	9		
9	142	34	30	59	18	84	9		
10	142	35	30	60	18	85	9		
11	120	36	27	61	15	86	9		
12	114	37	27	62	15	87	9		
13	108	38	27	63	15	88	9		
14	102	39	27	64	15	89	9		
15	96	40	27	65	15	90	9		
16	90	41	24	66	15	91	6		
17	84	42	24	67	15	92	6		
18	78	43	24	68	15	93	6		
19	72	44	24	69	15	94	6		
20	66	45	24	70	15	95	6		
21	60	46	21	71	12	96	6		
22	54	47	21	72	12	97	6		
23	48	48	21	73	12	98	6		
24	42	49	21	74	12	99	6		
25	36	50	21	75	12	100	6		
						101<	3		





# 6 MARATHON CUP BTT

MARATHON CUP  
BTT



MARATHON CUP  
BTT

2 LAPS

📍 NATURLAND

🔄 MTB XCM

📏 43,42KM

⬆️ 1.497M+

⬆️ MAX 2.164M

OFFICIAL MAPPING  
wikiloc

1 | 6,2 KM 🍏 🌻  
3 | 27,8 KM 🍏 🌻

2 | 21,6 KM 🍏 🌻

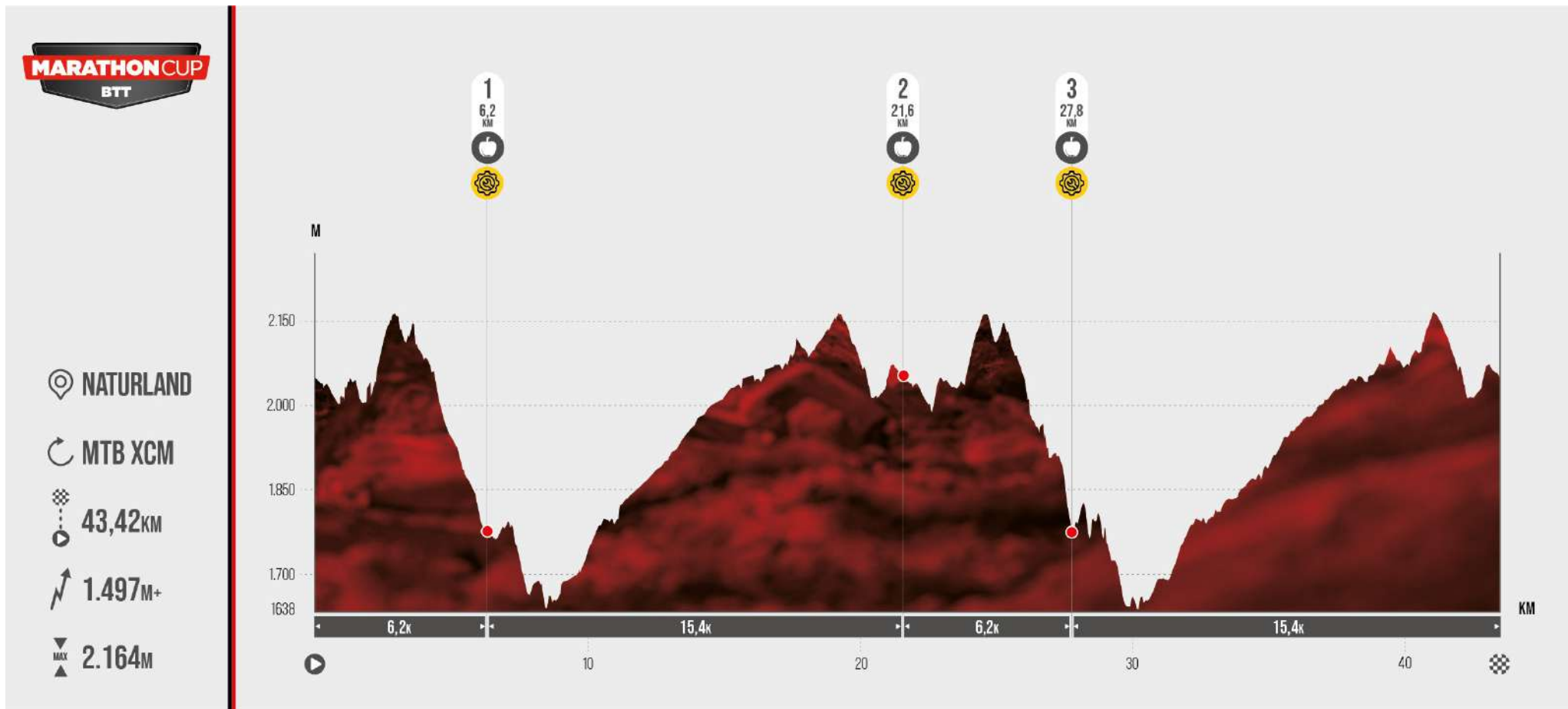
START | FINISH





# 6 MARATHON CUP BTT

MARATHON CUP  
BTT



**Teams Feed Zone 1 | 3**  
(Same location)

**LOCATION** ➔



**Teams Feed Zone 2**  
(Near the start zone)

**LOCATION** ➔



# 6 MARATHON CUP BTT

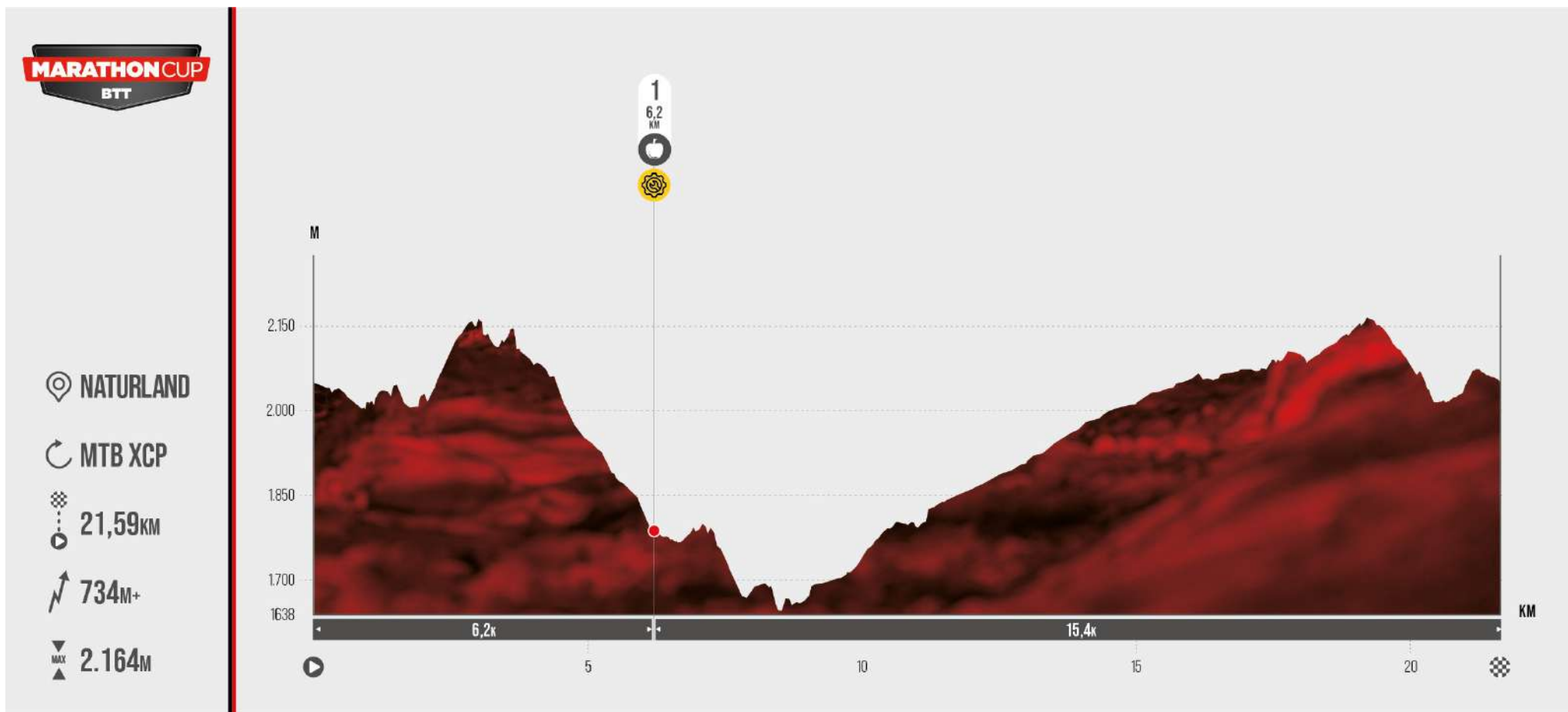
MARATHON CUP  
BTT





# 6 MARATHON CUP BTT

MARATHON CUP  
BTT



Teams Feed Zone

LOCATION ➔



# 7 REFERENCE HOSPITAL



In all circuits there will be personnel from the organization doing controls.

You can notify them of any incident and they will activate the necessary assistance in each case.

## HOSPITAL NOSTRA SENYORA DE MERITXELL

### Address

Camí dels Escalls, 19, AD700  
Escaldes-Engordany, Andorra

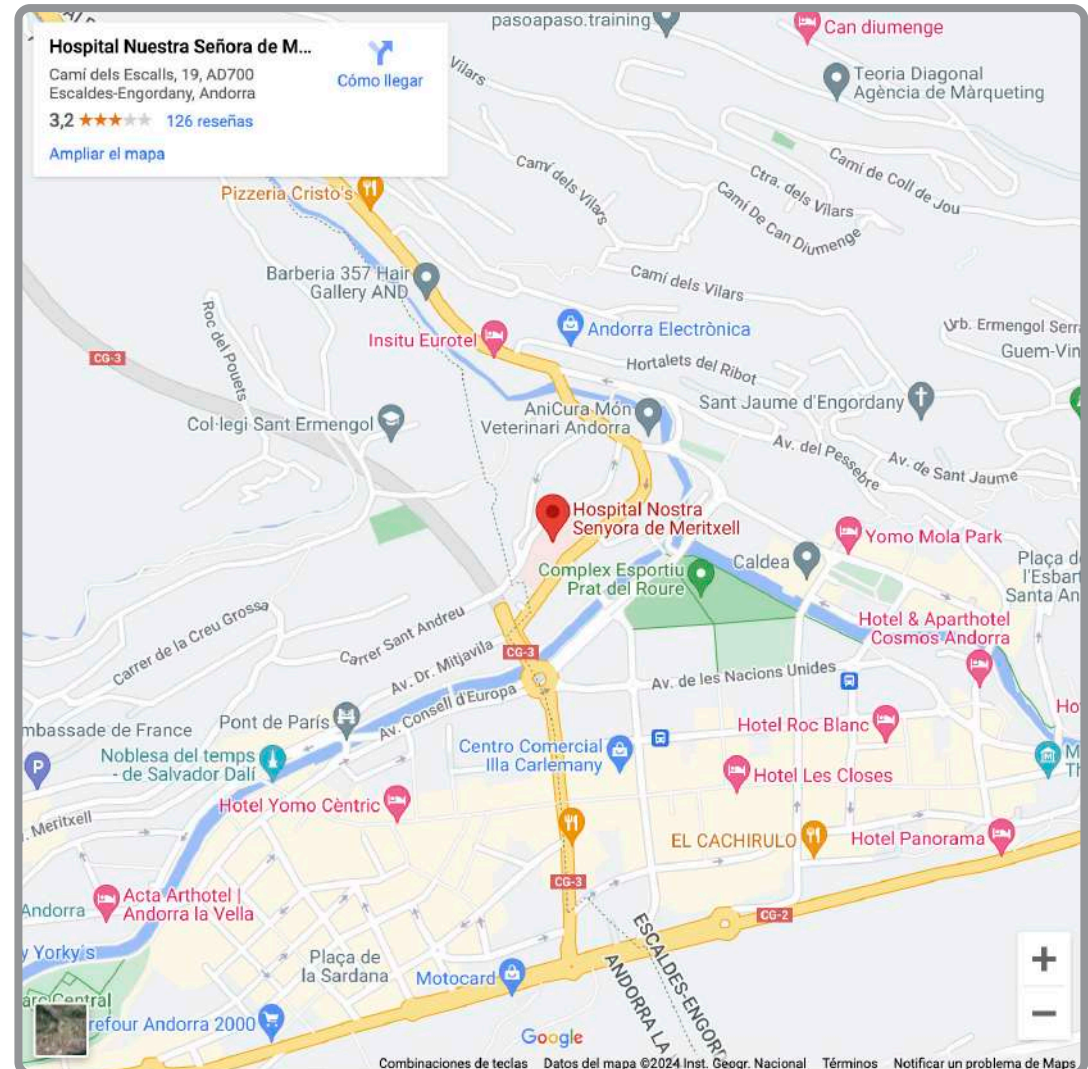
### Phone

+00376 871 000

### Schedule

Open 24 hours

HOW TO GET





INSTITUTIONAL SPONSORS



SPONSORS SUPERCUP



SPONSORS MARATHON BTT



OFFICIAL SPONSOR



OFFICIAL BIKE WASH



SUPPORTED BY



TECHNOLOGY PARTNER



OFFICIAL MAPPING



ORGANIZING

